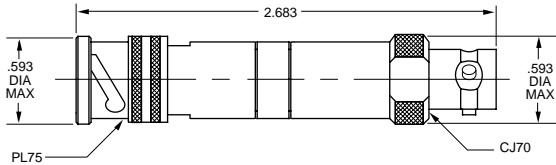
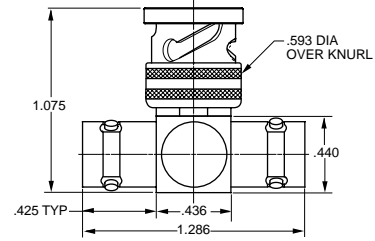


# TRB SERIES PAD / PARALLELING / T ADAPTER

## TRB SERIES PAD TRB 3-LUG PLUG AND JACK



BN73 Shown



TRB "T" ADAPTER

3-lug

BN73

2-lug

BN73TL

TRT "T" ADAPTER

4-lug

BN73FL

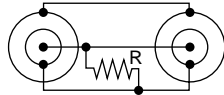
Threaded

BN373

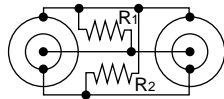
### PART NUMBER

### CIRCUITRY SCHEMATIC

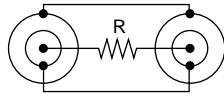
TNG2-R



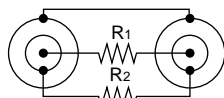
TNG2A-R1-R2



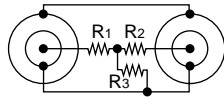
TNG3-R



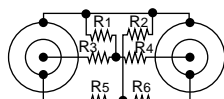
TNG3A-R1-R2



TNG4-R1-R2-R3



TNG4A-R1-R2-R3-R4-R5-R6

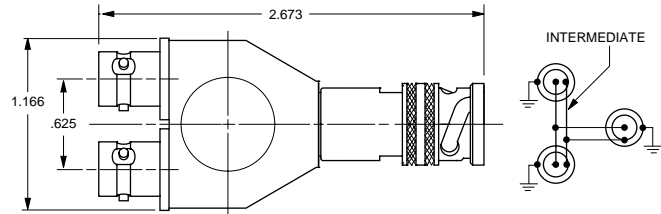


R-Resistance (1/2 W 1%)

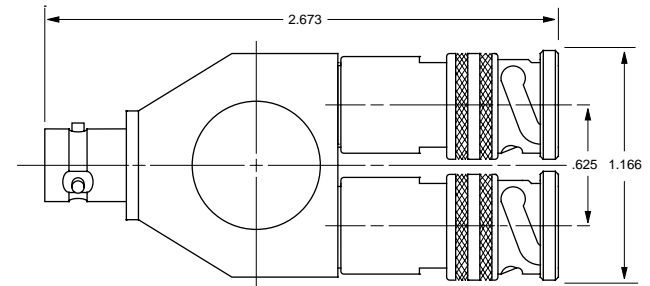
Substitute resistive value for each "R<sub>N</sub>" unless all values are identical.

## FIXED PARALLELING JACKS

TN2A Shown



TN2 Shown



### FIXED PARALLELING JACK

Two Plugs, One Jack

3-lug

TN2

2-lug

TN2TL

4-lug

TN2FL

Threaded

TN2T

Two Jacks, One Plug

3-lug

TN2A

2-lug

TN2TLA

4-lug

TN2FLA

Threaded

TN2TA

\* Other options available including Random Paralleling. Contact the factory for more information.

For Adapters, see pages 47-50. For Terminations, see page 45-46. For Impedance Matching Adapters, see page 47.