



Sensors > Vibration Sensors



Accelerometer Type: **IEPE**

Vibration Sensor Product Type: **Piezoelectric Accelerometer**

Number of Sensing Axes: **Triaxial**

Frequency Response: **1 to 8000 Hz**

Full Scale Output Voltage: **±5 VDC**

Features

Product Type Features

Output Current Type	AC
Sensor Package	Plug & Play
Accelerometer Type	IEPE
Vibration Sensor Product Type	Piezoelectric Accelerometer

Configuration Features

Electrical Connection	4-Pin Connector
-----------------------	-----------------

Electrical Characteristics

Excitation Current	2 – 10 mA
Excitation Voltage Range	18 – 30 VDC
Full Scale Output Voltage	±5 VDC

Signal Characteristics

Frequency Response	1 to 8000 Hz
--------------------	--------------

Body Features

Primary Product Material	Titanium
Product Weight	15 g[.525 oz]
Number of Sensing Axes	Triaxial

Mechanical Attachment

Sensor Mount Type	Adhesive
-------------------	----------



Usage Conditions

Operating Temperature Range	-55 – 125 °C[-67 – 257 °F]
-----------------------------	----------------------------

Other

Non-Linearity (FSO)	±1 %
Acceleration Range (±)	500 g
Sensitivity	10 mV/g

Product Compliance

For compliance documentation, visit the product page on [TE.com](#)>

EU RoHS Directive 2011/65/EU	Compliant
EU ELV Directive 2000/53/EC	Out of Scope
China RoHS 2 Directive MIIT Order No 32, 2016	No Restricted Materials Above Threshold
EU REACH Regulation (EC) No. 1907/2006	Current ECHA Candidate List: JAN 2024 (240) Not Yet Reviewed
Halogen Content	Not Yet Reviewed for halogen content
Solder Process Capability	Not reviewed for solder process capability

Product Compliance Disclaimer

This information is provided based on reasonable inquiry of our suppliers and represents our current actual knowledge based on the information they provided. This information is subject to change. The part numbers that TE has identified as EU RoHS compliant have a maximum concentration of 0.1% by weight in homogenous materials for lead, hexavalent chromium, mercury, PBB, PBDE, DBP, BBP, DEHP, DIBP, and 0.01% for cadmium, or qualify for an exemption to these limits as defined in the Annexes of Directive 2011/65/EU (RoHS2). Finished electrical and electronic equipment products will be CE marked as required by Directive 2011/65/EU. Components may not be CE marked. Additionally, the part numbers that TE has identified as EU ELV compliant have a maximum concentration of 0.1% by weight in homogenous materials for lead, hexavalent chromium, and mercury, and 0.01% for cadmium, or qualify for an exemption to these limits as defined in the Annexes of Directive 2000/53/EC (ELV). Regarding the REACH Regulations, TE’s information on SVHC in articles for this part number is still based on the European Chemical Agency (ECHA) ‘Guidance on requirements for substances in articles’(Version: 2, April 2011), applying the 0.1% weight on weight concentration threshold at the finished product level. TE is aware of the European Court of Justice ruling of September 10th, 2015 also known as O5A (Once An Article Always An Article) stating that, in case of ‘complex object’, the threshold for a SVHC must be applied to both the product as a whole and simultaneously to each of the articles forming part of its composition. TE has evaluated this ruling based on the new ECHA “Guidance on requirements for substances in articles” (June 2017, version 4.0) and will be updating its statements accordingly.

Also in the Series | [MEAS 7132A](#)



Vibration Sensors(1)

Customers Also Bought



TE Part #1-2271457-6
Header Assembly: Wire-to-Board
Connector, Spring Clamp, 7.5 mm
pitch, 14.5A



TE Part #3-1123829-1
Header Assembly: Wire-to-Board, 20-
45A, 250-630V



TE Part #6-2271013-0
CELLO,PIN,96P,TH,RA,FG,DIP4.0,-



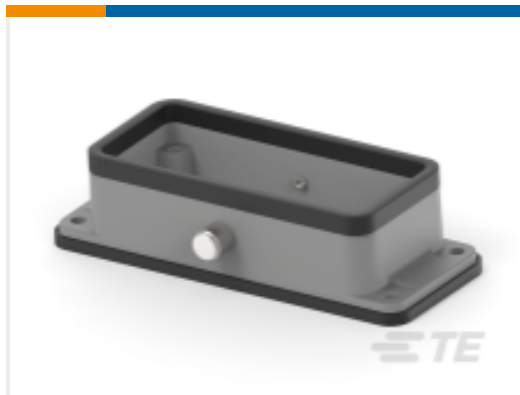
TE Part #318A-120
CABLE 318A



TE Part #T1009033100-000
H3A-KDBP



TE Part #T1390160132-001
H16B-TSH-RC-M32



TE Part #T1550160000-001
H16B-AG-RC

Documents

CAD Files

3D PDF

3D

Customer View Model

ENG_CVM_CVM_7132A-0500_D.2d_dxf.zip

English

Customer View Model

ENG_CVM_CVM_7132A-0500_D.3d_igs.zip

English

Customer View Model

ENG_CVM_CVM_7132A-0500_D.3d_stp.zip

English

By downloading the CAD file I accept and agree to the [Terms and Conditions](#) of use.

Datasheets & Catalog Pages

7132A_7132B_Accelerometer

English

